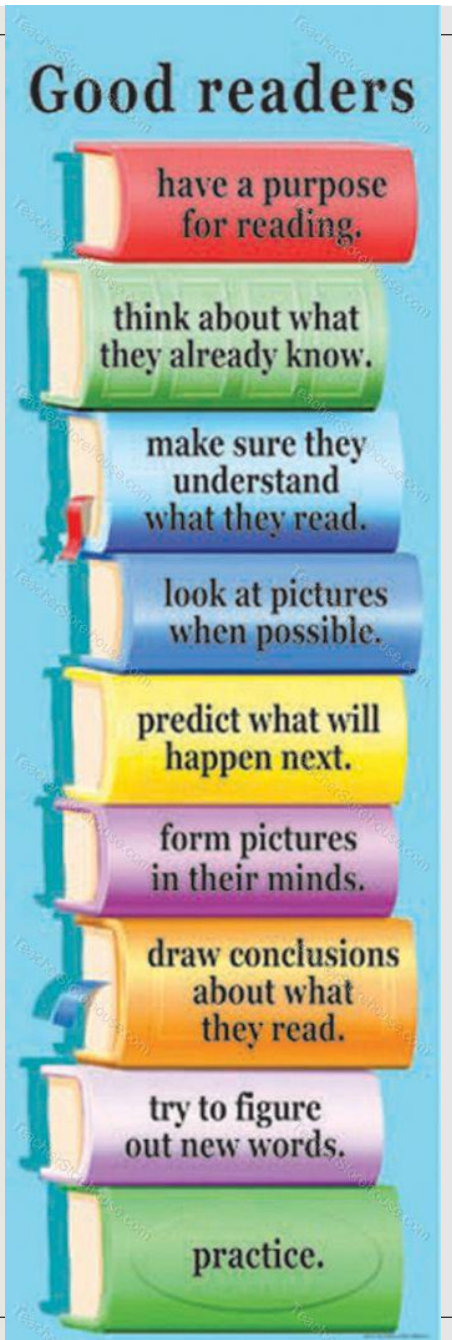




READING AT
OLDFIELD IN KS2

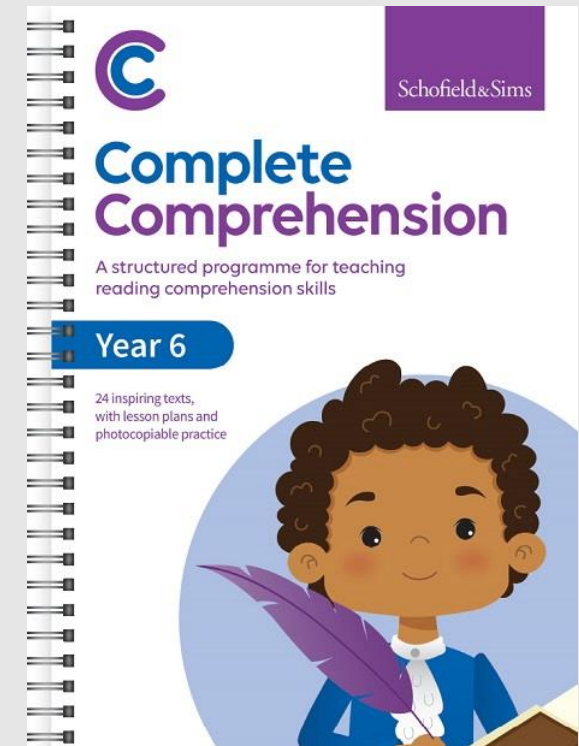
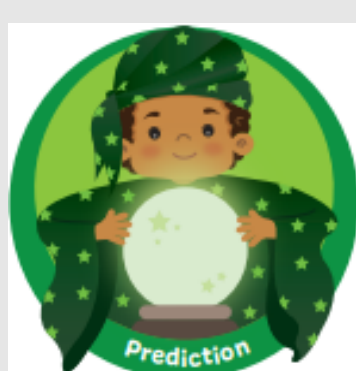
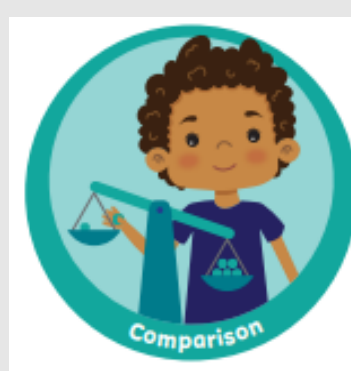
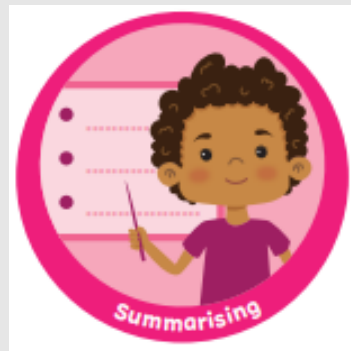
Our new initiative

- We have recently launched two new reading skills initiative
 - The Reading Dogs – EYFS/KS1
 - The Reading Characters – KS2
- Question prompt sheet focusing on a reading skill each half term (also available on the website)
 - This term – **Relationship** and **Prediction**
- Link into a new Reading Comprehension scheme – *Complete Comprehension*.



Who are the Reading Characters?

The Reading Characters are linked to the Complete Comprehension scheme that we teach in class.



Our termly focus

Spring 1 – Relationship and prediction
(Year 6 Inference and Prediction to support SATs prep)

Spring 2 – Retrieving and summarising

Summer 1 – Word meaning and word choice

Summer 2 – Inference and comparison

KS2

Spring 1 - Sequencing

Spring 2 - Retrieving

Summer 1 - Vocabulary

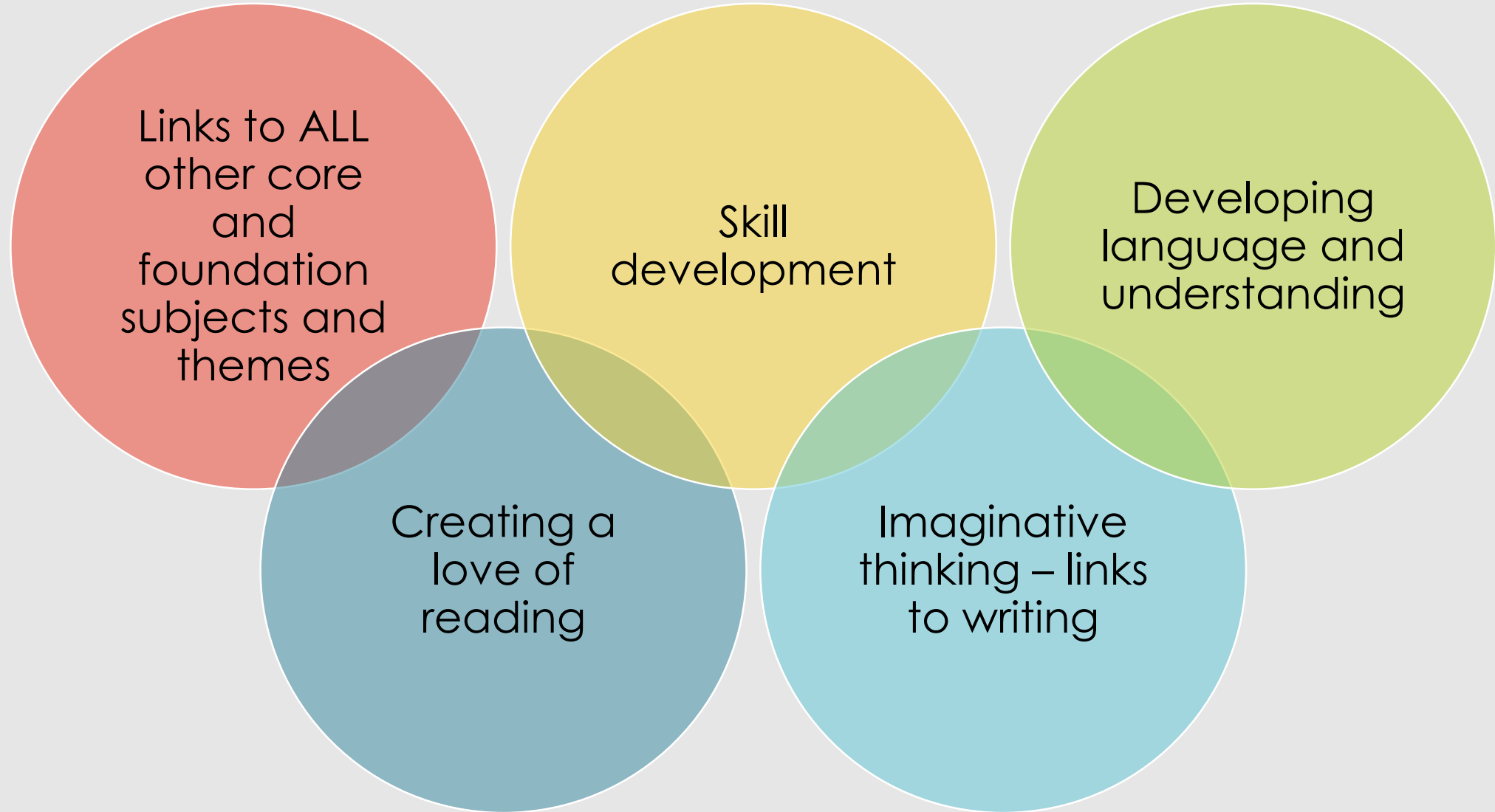
Summer 2 - Inference

EYFS/KS1

Reading skills

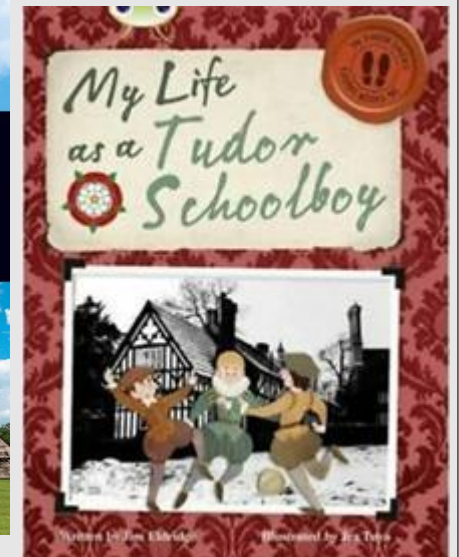
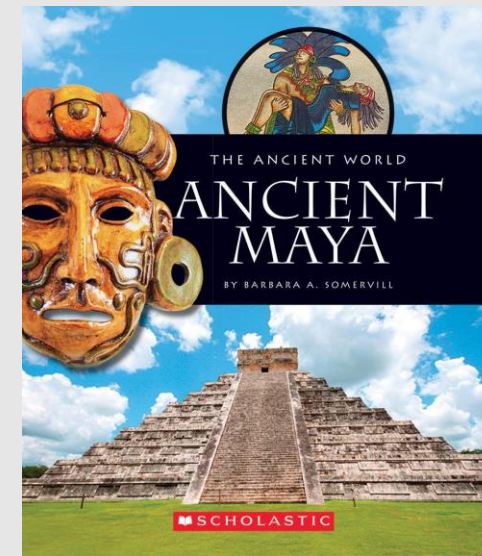
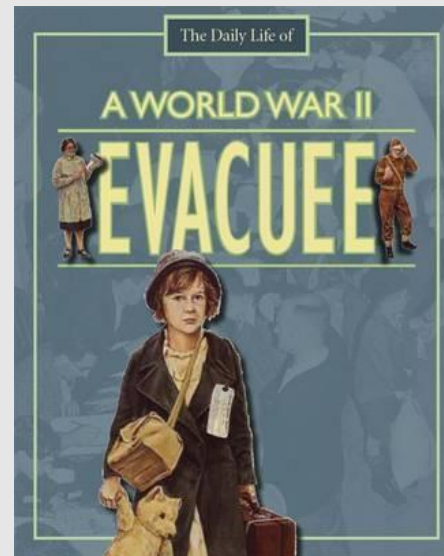
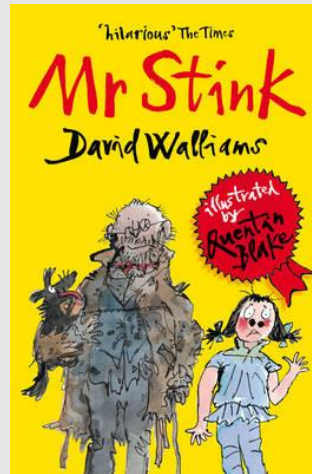
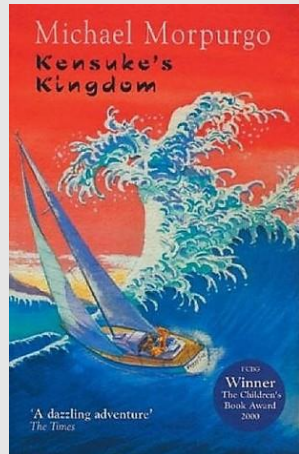
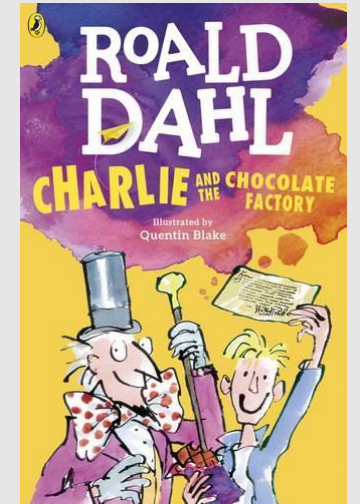
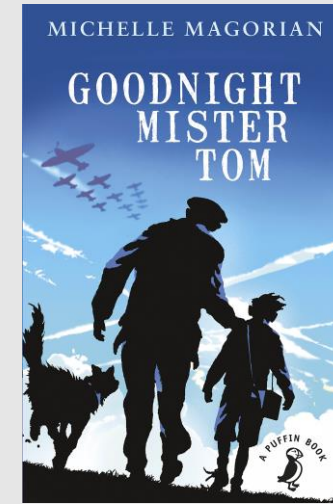
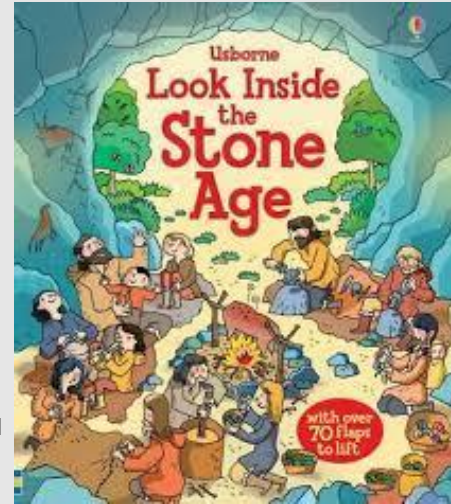
- **Prediction** - Predict what might happen in a text, giving evidence and reasons.
- **Inference** - Make inferences (conclusions) from the text. How and why questions. Using information from the text to answer and justify questions.
- **Word meaning and word choice** - Draw on knowledge of vocabulary to understand texts and to identify why the author chose certain words.
- **Relationship** - Identify different genres for both fiction and non-fiction; identify character development during a text.
- **Retrieval** - Identify/explain key aspects of fiction and non-fiction texts, such as characters, events, titles and information.
- **Summarising** – Find and talk about the text's main points, characters or events.
- **Comparison** - Compare the events, characters and structure of the text. Identifying similarities and differences with other texts of a similar nature.

How reading links to the wider curriculum



Reading at Oldfield

- We read extracts, or even whole texts, of fiction books with a theme linking in with other topics. Non-fiction texts are used as resources to support learning.
- Texts cover a range of genres, including mystery, fantasy, adventure and humour for fiction; newspapers, information texts, poetry and biographies for non-fiction.
- At the end of KS2, the Reading SAT consists of three texts, usually with a mixture of fiction and non-fiction. The questions include fact retrieval, inference, predictions, word choice, sequencing, true or false and matching text titles with summaries.



Other opportunities for reading

- Y6 reading buddies with Y1 (currently postponed due to COVID)
- Links with Maidenhead Library
- Y3 and Y4 ABC readers – volunteers (currently postponed due to COVID)
- Regular 1:1 reading sessions with TA's
- Comprehension intervention groups



Helpful links

- <https://www.oxfordowl.co.uk/for-home/find-a-book/library-page/> - free reading books
- <https://home.oxfordowl.co.uk/reading/reading-comprehension/> - videos explaining what 'Comprehension' is and how best to support your child
- <https://schoolreadinglist.co.uk/category/reading-lists-for-ks2-school-pupils/> - Reading lists for KS2 pupils
- <https://www.bbc.co.uk/bitesize/topics/zs44jxs> - KS2 Comprehension videos BBC Bitesize

Spellings at Oldfield

- Whilst we've got you here!
- To ensure consistency between year groups, a new spelling scheme has been brought in.
- This will include the statutory spellings for both LKS2 and UKS2. They will be exposed to these words three-four times across the phase therefore making sure all children will learn and understand these particular words.
- The look, say, cover, write grids will remain the same and there will sometimes be an activity to go alongside to ensure understanding.
- The scheme follows the national curriculum for phonics and spelling rules.

Any
questions